

**Tom's Stretch**

July 10 – August 22, 2026

**Gallery 1**



**Tom of Finland**

*Tom's Men*, 1970

graphite on paper

19 x 34 inches

(48.3 x 86.4 cm)

framed:

41 3/4 x 26 1/8 x 1 3/4 inches

(106 x 66.4 x 4.4 cm)



**Tom of Finland**

*Untitled (Preparatory Drawing)*, 1944

graphite on paper

11 1/4 x 8 1/4 inches

(28.6 x 21 cm)

framed:

16 7/8 x 13 7/8 x 1 1/2 inches

(42.9 x 35.2 x 3.8 cm)



**Tom of Finland**

*Untitled (Preparatory Drawing)*, 1944

graphite on paper

11 3/4 x 8 1/4 inches

(29.8 x 21 cm)

framed:

17 3/8 x 13 7/8 x 1 1/2 inches

(44.1 x 35.2 x 3.8 cm)

**DAVID  
KORDANSKY  
GALLERY**



**Tom of Finland**

*Untitled*, 1946

gouache on paper  
11 1/4 x 8 1/4 inches  
(28.7 x 20.8 cm)

framed:

16 3/4 x 13 3/4 x 1 3/4 inches  
(42.5 x 34.9 x 4.4 cm)



**Tom of Finland**

*Untitled (Preparatory Drawing)*, 1944

graphite on paper  
11 1/4 x 8 1/4 inches  
(28.7 x 21 cm)

framed:

17 x 13 3/4 x 1 1/2 inches  
(43.2 x 34.9 x 3.8 cm)



**Tom of Finland**

*Untitled (Preparatory Drawing)*, 1944

graphite on paper  
11 3/4 x 8 1/8 inches  
(29.8 x 20.6 cm)

framed:

17 1/4 x 13 3/4 x 1 1/2 inches  
(43.8 x 34.9 x 3.8 cm)



**Jared Buckhiester**

*exhaustion of the content by the form*, 2015

ink etching and watercolor monotype with chine collé  
19 5/8 x 15 1/8 inches  
(49.8 x 38.4 cm)

framed:

20 5/8 x 17 5/8 x 1 1/4 inches  
(52.2 x 44.6 x 3.2 cm)

unique in a series of 20

**DAVID  
KORDANSKY  
GALLERY**



**Jared Buckhiester**

*all signs must be excessively clear, 2015*

ink etching and watercolor monotype with chine collé

19 5/8 x 15 1/8 inches

(49.8 x 38.4 cm)

framed:

20 5/8 x 17 5/8 x 1 1/4 inches

(52.2 x 44.6 x 3.2 cm)

unique in a series of 20



**Jared Buckhiester**

*the rise and fall of fortunes, 2015*

ink etching and watercolor monotype with chine collé

19 5/8 x 15 1/8 inches

(49.8 x 38.4 cm)

framed:

20 5/8 x 17 5/8 x 1 1/4 inches

(52.2 x 44.6 x 3.2 cm)

unique in a series of 20



**Jared Buckhiester**

*a light without shadow, 2014*

ink etching and watercolor monotype with chine collé

19 5/8 x 15 1/8 inches

(49.8 x 38.4 cm)

framed:

20 5/8 x 17 5/8 x 1 1/4 inches

(52.2 x 44.6 x 3.2 cm)

unique in a series of 20



**Tom of Finland**

*Untitled, 1983*

colored pencil on paper

20 1/8 x 14 inches

(51.1 x 35.6 cm)

framed:

29 5/8 x 24 x 1 3/8 inches

(75.2 x 61 x 3.5 cm)

DAVID  
KORDANSKY  
GALLERY



**Paul Mpagi Sepuya**  
*Positioning* (\_DSF7986), 2023  
archival pigment print  
60 x 48 inches  
(152.4 x 121.9 cm)  
framed:  
61 x 49 x 2 inches  
(154.9 x 124.5 x 5.1 cm)  
Edition of 5, with 2 AP



**Tom of Finland**  
*Untitled (Preparatory Drawing)*, 1985  
graphite on paper  
11 5/8 x 8 1/4 inches  
(29.5 x 21 cm)  
framed:  
17 1/8 x 13 3/4 x 1 1/2 inches  
(43.5 x 34.9 x 3.8 cm)



**Hajime Sorayama**  
*Untitled*, 2021  
acrylic on illustration board  
28 3/4 x 20 1/4 inches  
(73 x 51.5 cm)  
framed:  
34 7/8 x 26 1/2 x 2 1/8 inches  
(88.7 x 67.4 x 5.5 cm)



**Tom of Finland**  
*Untitled (from "Cyclist and the Farmer Boy")*, 1973  
graphite on paper  
11 3/4 x 8 3/8 inches  
(29.8 x 21.1 cm)  
framed:  
17 3/8 x 14 x 1 1/2 inches  
(44.1 x 35.6 x 3.8 cm)

# DAVID KORDANSKY GALLERY



## **Nick Hoecker**

*Club Chair IV*, 2026

Herman Miller Eames chair, Kaleita Physique sleeveless T-shirt,  
and Ammo bowling ball

39 1/4 x 27 3/4 x 31 1/4 inches  
(99.7 x 70.5 x 79.4 cm)



## **Tom of Finland**

*Untitled (from Kake vol. 17 - "Loading Zone")*, 1975

pen and ink on paper

12 7/8 x 9 1/2 inches  
(32.7 x 24.1 cm)

framed:

18 5/8 x 15 1/8 x 1 1/2 inches  
(47.3 x 38.4 x 3.8 cm)



## **Breyer P-Orridge**

*Yogass*, 2000

Polaroid

4 x 4 inches  
(10.2 x 10.2 cm)

framed:

16 3/4 x 14 3/4 x 1 1/4 inches  
(42.5 x 37.5 x 3.2 cm)



## **Breyer P-Orridge**

*Full Lotus in 5-inch Heels*, 1996

Polaroid

4 x 4 inches  
(10.2 x 10.2 cm)

framed:

16 3/4 x 14 3/4 x 1 1/4 inches  
(42.5 x 37.5 x 3.2 cm)

**DAVID  
KORDANSKY  
GALLERY**



**Breyer P-Orridge**

*Steel Egg*, 1998

Polaroid

4 x 4 inches

(10.2 x 10.2 cm)

framed:

10 3/4 x 8 1/2 x 11/2 inches

(27.3 x 21.6 x 3.8 cm)



**Robert Gober**

*Untitled*, 1989

graphite on vellum

6 x 5 7/8 inches

(15.2 x 14.9 cm)

framed:

15 1/8 x 15 1/8 x 1 3/4 inches

(38.4 x 38.4 x 4.4 cm)



**Jim Shaw**

*The Built In Twins*, 2018

acrylic on muslin

41 1/4 x 51 1/8 x 1 3/4 inches

(104.8 x 129.7 x 4.4 cm)



**G.B. Jones**

*Vaccine*, 2025

graphite on paper

16 x 10 inches

(40.6 x 25.4 cm)

framed:

19 3/4 x 12 3/4 x 1 1/2 inches

(50.2 x 32.4 x 3.8 cm)

**DAVID  
KORDANSKY  
GALLERY**



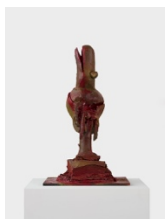
**Cindy Sherman**  
*Untitled, 1992*  
chromogenic color print  
68 x 45 inches  
(172.7 x 114.3 cm)  
framed:  
69 3/4 x 47 x 2 1/2 inches  
(175.6 x 118.7 x 6 cm)  
Edition of 6, with 1 AP



**Cindy Sherman**  
*Untitled, 1992*  
chromogenic color print  
68 x 45 inches  
(172.7 x 114.3 cm)  
framed:  
69 3/4 x 47 x 2 1/2 inches  
(175.6 x 118.7 x 6 cm)  
Edition of 6, with 1 AP

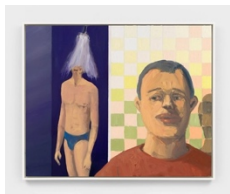


**Cindy Sherman**  
*Untitled, 1992*  
chromogenic color print  
68 x 45 inches  
(172.7 x 114.3 cm)  
framed:  
69 1/2 x 46 3/4 x 2 1/2 inches  
(175.6 x 118.7 x 6 cm)  
Edition of 6, with 1 AP

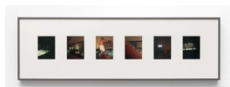


**Paul McCarthy**  
*Shit Face Fucked Up, 2009 / 2017*  
acrylic polyurethane on Matrix G  
39 1/2 x 24 x 21 1/4 inches  
(100.3 x 61 x 54 cm)

**DAVID  
KORDANSKY  
GALLERY**



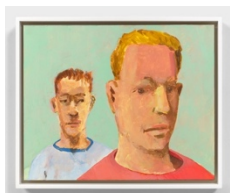
**Steve Locke**  
*cruisers (stall)*, 2023  
oil on canvas  
30 x 36 inches  
(76.2 x 91.4 cm)  
framed:  
31 3/8 x 37 3/8 x 2 inches  
(80 x 94.9 x 5.1 cm)



**Christopher Culver**  
*Bathhouse in Texas*, 2012 / 2025  
digital C-prints  
six parts, each:  
4 x 3 inches  
(10.2 x 7.6 cm)  
overall, framed:  
11 x 34 x 1 1/2 inches  
(27.9 x 86.4 x 3.8 cm)  
Edition of 1, with 1 AP

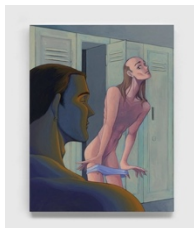


**Tom of Finland**  
*Untitled*, 1979  
graphite on paper  
15 3/4 x 11 3/4 inches  
(40 x 29.7 cm)  
framed:  
18 x 14 1/2 x 1 1/2 inches  
(45.7 x 36.8 x 3.8 cm)



**Steve Locke**  
*Cruisers #2*, 2021  
egg tempera and oil emulsion on Claybord  
11 x 14 inches  
(27.9 x 35.6 cm)  
framed:  
12 x 15 x 2 1/4 inches  
(30.5 x 38.1 x 5.7 cm)

# DAVID KORDANSKY GALLERY



**Julien Ceccaldi**

*Locker Room Etiquette*, 2026

acrylic on wood panel

24 x 18 x 1 inches

(61 x 45.7 x 2.5 cm)



**Namio Harukawa**

*Untitled 09*, 1990

charcoal on paper

10 1/2 x 7 1/4 inches

(26.7 x 18.4 cm)

framed:

14 1/2 x 11 1/4 x 1 1/2 inches

(36.8 x 28.6 x 5 cm)



**Tom of Finland**

*Untitled*, c. 1986

graphite on paper

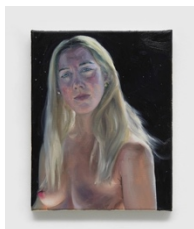
11 5/8 x 8 3/8 inches

(29.5 x 21.1 cm)

framed:

17 1/4 x 14 x 1 1/2 inches

(43.8 x 35.6 x 3.8 cm)



**Jenna Gribbon**

*Cosmic Inflections*, 2026

oil on linen

14 x 11 x 1 inches

(35.6 x 27.9 x 2.5 cm)

**DAVID  
KORDANSKY  
GALLERY**



**Paul P.**

*Untitled*, 2024

watercolor on paper

11 3/4 x 7 1/2 inches

(30 x 19 cm)

framed:

17 3/4 x 13 1/4 x 1 1/2 inches

(45.1 x 33.7 x 3.8 cm)



**Felix Gonzalez-Torres**

*"Untitled" (Para Un Hombre En Uniforme)*, 1991

red-white-and-blue lollipops, endless supply

dimensions variable



**David Rappeneau**

*Untitled*, 2024

acrylic, ballpoint pen, pencil, charcoal pencil, and acrylic marker on paper

24 1/4 x 18 1/2 inches

(61.6 x 47 cm)

framed:

27 3/8 x 21 5/8 x 1 1/2 inches

(69.5 x 54.9 x 3.8 cm)



**Ana Benaroya**

*In the Limelight*, 2026

India ink and marker on Bristol board

19 x 24 3/8 inches

(48.3 x 61.9 cm)

framed:

22 1/4 x 27 5/8 x 1 3/4 inches

(56.4 x 70 x 4.4 cm)

**DAVID  
KORDANSKY  
GALLERY**



**Steven Arnold**

*Untitled, 1974*

ink on paper

10 1/2 x 7 1/2 inches

(26.7 x 19.1 cm)

framed:

14 x 10 3/4 x 1 3/8 inches

(35.6 x 27.3 x 3.5 cm)



**Tom of Finland**

*Untitled, c. 1966 - 1990*

mixed media on paper

11 1/2 x 8 1/4 inches

(29.2 x 21 cm)

framed:

16 7/8 x 13 5/8 x 1 1/2 inches

(42.9 x 34.6 x 3.8 cm)



**Huma Bhabha**

*Untitled, 2026*

ink, acrylic, and collage on C-print

30 7/8 x 20 7/8 inches

(78.4 x 53 cm)

framed:

36 x 26 x 1 5/8 inches

(91.4 x 66 x 4.1 cm)



**Matthew Barney**

*CREMASTER 3: I Die Daily, 2002*

C-print in acrylic frame

53 x 43 1/4 x 1 1/4 inches

(134.6 x 109.9 x 3.2 cm)

Edition of 6, with 2 AP

DAVID  
KORDANSKY  
GALLERY



**Bob Mizer**

*Jim Carroll (with antlers)*, 1951  
selenium-toned gelatin silver print  
9 3/8 x 7 3/8 inches  
(23.8 x 18.7 cm)

framed:

14 3/4 x 12 3/4 x 1 3/8 inches  
(37.5 x 32.4 x 3.5 cm)

Edition of 5



**Bob Mizer**

*Gustaf Holmes (with monkey)*, 1951  
selenium-toned gelatin silver print  
7 1/4 x 9 1/2 inches  
(18.4 x 24.1 cm)

framed:

12 1/2 x 14 3/4 x 1 3/8 inches  
(31.8 x 37.5 x 3.5 cm)

Edition of 5



**James Bidgood**

*Pan*, c. 1960s / 2008  
digital C-print  
23 1/4 x 23 inches  
(59.1 x 58.4 cm)

framed:

35 1/8 x 34 1/2 x 1 1/2 inches  
(89.2 x 87.6 x 3.8 cm)

Edition of 15



**Mike Kuchar**

*Neptune's Catch*, 1982  
oil on canvas board, in artist's frame  
29 1/4 x 41 1/4 x 1 1/4 inches  
(74.3 x 104.8 x 3.2 cm)

**DAVID  
KORDANSKY  
GALLERY**



**Steven Arnold**

*Untitled, 1991*

ink on paper

19 x 24 inches

(48.3 x 61 cm)

framed:

22 5/8 x 27 1/2 x 1 3/8 inches

(57.5 x 69.8 x 3.5 cm)



**Jason Fox**

*Monsters in Love, 2023*

ink and pencil on paper

16 x 12 inches

(40.6 x 30.5 cm)

framed:

20 5/8 x 16 3/4 x 1 3/4 inches

(52.4 x 42.4 x 4.4 cm)



**Tom of Finland**

*Untitled, 1984*

graphite on paper

17 1/4 x 12 1/8 inches

(43.8 x 30.8 cm)

framed:

20 3/4 x 16 x 1 1/2 inches

(52.7 x 40.6 x 3.8 cm)



**Joey Strella**

*Chester Cheetah and Silly Rabbit, 2022*

graphite on paper

5 x 5 1/2 inches

(12.7 x 14 cm)

framed:

12 1/8 x 12 5/8 x 1 1/4 inches

(30.8 x 32.1 x 3.2 cm)

**DAVID  
KORDANSKY  
GALLERY**



**Joey Strella**

*Martin and Dig'em Frog, 2022*

graphite on paper

5 x 6 1/4 inches

(12.7 x 15.9 cm)

framed:

11 3/8 x 12 5/8 x 1 1/4 inches

(28.9 x 32.1 x 3.2 cm)



**Joey Strella**

*Mr Brawny and Mr Clean, 2022*

graphite on paper

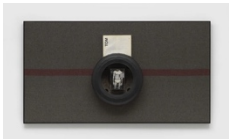
5 1/2 x 6 1/2 inches

(14 x 16.5 cm)

framed:

11 7/8 x 12 1/2 x 1 1/4 inches

(30.2 x 31.8 x 3.2 cm)



**Nick Hoecker**

*Heritage XIV, 2026*

German wool blanket, Miata spare tire with vinyl leather cover,

Tom of Finland Bootleg Magazine, Calvin Klein discounted

underwear in box, Plexiglas cases, and hardware, in steel

artist's frame

39 7/8 x 73 3/4 x 7 inches

(101.3 x 187.3 x 17.8 cm)



**Ken Tisa**

*Tan Line, 1990 - 1998*

acrylic on canvas

8 x 6 x 3/4 inches

(20.3 x 15.2 x 1.9 cm)

**DAVID  
KORDANSKY  
GALLERY**



**Tom of Finland**

*Untitled (Preparatory Drawing, from Kake vol. 7 - "Tea Room Odyssey"), 1970*

ink and gouache on paper

8 3/8 x 5 7/8 inches

(21.1 x 14.9 cm)

framed:

14 x 11 1/2 x 11/2 inches

(35.6 x 29.2 x 3.8 cm)



**Matthew Brannon**

*Adult Films, 2025*

silkscreen on paper

28 x 25 inches

(71.1 x 63.5 cm)

framed:

30 3/4 x 27 3/4 x 1 3/8 inches

(78.1 x 70.5 x 3.5 cm)



**George Quaintance**

*Sunset, 1953*

oil on canvas

40 x 32 x 1 1/2 inches

(101.6 x 81.3 cm)

framed:

41 1/4 x 33 x 1 3/4 inches

(104.8 x 83.8 x 4.4 cm)



**Tom of Finland**

*Untitled (from Kake vol. 23 - "In the Wild West"), 1982*

pen and ink on paper

13 1/8 x 8 3/8 inches

(33.3 x 21.1 cm)

framed:

18 3/4 x 14 x 1 1/2 inches

(47.6 x 35.4 x 3.8 cm)

**DAVID  
KORDANSKY  
GALLERY**



**Tom of Finland**

*Untitled (from "Circus")*, 1975

pen and ink on paper

11 5/8 x 8 1/4 inches

(29.5 x 21 cm)

framed:

17 x 13 5/8 x 1 1/2 inches

(43.2 x 34.6 x 3.8 cm)



**William E. Jones**

*Piss Play*, 1975, 2023

oil on canvas

25 x 15 x 3/4 inches

(63.5 x 38.1 x 1.9 cm)

framed:

26 1/4 x 16 1/4 x 1 3/8 inches

(66.7 x 41.3 x 3.5 cm)



**S. Clay Wilson**

*Zap Comix #2 Complete 1-Page Story Original Art (Apex Novelties, 1968)*, 1968

ink over graphite on board

12 x 8 1/2 inches

(30.5 x 21.6 cm)

framed:

14 5/8 x 11 x 1 1/2 inches

(37.1 x 27.9 x 3.8 cm)



**Basil Wolverton**

*Jest*, 1953

ink over graphite on Bristol board

7 1/2 x 7 1/2 inches

(19.1 x 19.1 cm)

framed:

10 1/2 x 10 x 1 1/2 inches

(26.7 x 25.4 x 3.8 cm)

# DAVID KORDANSKY GALLERY



## **Victor Moscoso**

*Mr. Peanut Metamorphosis (Zap no. 2)*, 1968

ink on paper

12 3/4 x 10 inches

(32.4 x 25.4 cm)

framed:

15 1/2 x 12 1/2 x 11/2 inches

(39.4 x 31.8 x 3.8 cm)



## **Spain Rodriguez**

*Trashman: "Roum 3 to Zeltron Z-32..."*, 1968

ink and graphite on paper

24 x 17 1/2 inches

(61 x 44.5 cm)

framed:

27 x 20 1/4 x 1 5/8 inches

(68.6 x 51.4 x 4.1 cm)



## **R. Crumb**

*Untitled (Crumb Hanging on Woman's Leg)*, 2007

ink and correction fluid on paper

15 5/8 x 12 1/2 inches

(39.7 x 31.8 cm)

framed:

22 x 18 3/4 x 1 1/2 inches

(55.9 x 47.6 x 3.8 cm)



## **R. Crumb**

*I was raised to be...*, 2007

ink and correction fluid on paper

13 1/8 x 8 7/8 inches

(33.3 x 22.5 cm)

framed:

18 3/4 x 14 1/2 x 1 1/2 inches

(47.6 x 36.8 x 3.8 cm)

**DAVID  
KORDANSKY  
GALLERY**



**Tom of Finland**

*Untitled (from Mike - "In the Park" Pt. 2), 1975*

pen and ink on paper

11 3/4 x 8 3/8 inches

(29.8 x 21.1 cm)

framed:

17 3/8 x 14 x 1 1/2 inches

(44.1 x 35.6 x 3.8 cm)



**Basil Wolverton**

*Joker, 1955*

ink over graphite on Bristol board

11 1/2 x 7 1/2 inches

(29.2 x 19.1 cm)

framed:

14 1/4 x 10 x 1 1/2 inches

(36.2 x 25.4 x 3.8 cm)



**R. Crumb**

*Let's Eat!, 1968*

ink on paper

9 5/8 x 7 5/8 inches

(24.4 x 19.4 cm)

framed:

12 x 10 x 1 inches

(30.5 x 25.4 x 2.5 cm)



**Scott Burton**

*TWO-PART TABLE, 1989*

Lake Placid Blue granite

20 x 60 x 40 inches

(50.8 x 152.4 x 101.6 cm)

Edition of 5

# DAVID KORDANSKY GALLERY

## Gallery 2



### **P. Staff**

*The Foundation*, 2015

single-channel HD video, color, sound

28:20 minutes

Edition of 5, with 2 AP

## Gallery 3



### **Hardy Hill**

*2 figures through open door*, 2026

contact print from handmade negative on fiber paper

20 x 24 inches

(50.8 x 61 cm)

framed:

25 3/4 x 29 3/4 x 1 1/2 inches

(65.4 x 75.6 x 3.8 cm)



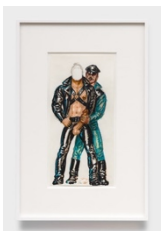
### **Tiona Nekkia McClodden**

*NEVER LET ME GO | XII. only by special order [12]*, 2024

black jute rope, leather, leather dye, and Saphir shoe polish

50 3/8 x 26 3/8 x 4 1/2 inches

(128 x 67 x 11.4 cm)



### **Tom of Finland**

*Untitled*, 1989

marker and graphite on paper

11 5/8 x 5 7/8 inches

(29.5 x 14.9 cm)

framed:

18 x 12 x 1 1/2 inches

(45.7 x 30.5 x 3.8 cm)

**DAVID  
KORDANSKY  
GALLERY**



**Mark Grotjahn**

*Untitled (Darker Indigo Blue Rub for EH Mask M14.g)*, 2012  
painted bronze  
30 x 13 1/2 x 17 1/2 inches  
(76.2 x 34.3 x 44.5 cm)



**Greg Gaar**

*Dual Uniforms, San Francisco, CA, 1976 / 2026*  
archival giclée print  
7 3/8 x 11 inches  
(18.6 x 27.9 cm)  
framed:  
7 7/8 x 11 1/2 x 1 1/4 inches  
(19.8 x 29.2 x 3.2 cm)  
Edition of 3, with 1 AP



**Greg Gaar**

*Leather Daddy, San Francisco, CA, 1975 / 2026*  
archival giclée print  
11 x 7 3/8 inches  
(27.9 x 18.6 cm)  
framed:  
11 1/2 x 7 7/8 x 1 1/4 inches  
(29.2 x 19.8 x 3.2 cm)  
Edition of 3, with 1 AP



**Tom of Finland**

*Untitled*, 1972  
pen and ink on paper  
11 1/4 x 7 5/8 inches  
(28.6 x 19.4 cm)  
framed:  
17 1/2 x 13 7/8 x 1 1/2 inches  
(44.5 x 35.2 x 3.8 cm)

**DAVID  
KORDANSKY  
GALLERY**



**Tom of Finland**

*Untitled*, 1963

gouache on paper

10 7/8 x 8 1/2 inches

(27.6 x 21.6 cm)

framed:

20 1/2 x 16 1/2 x 1 1/2 inches

(52.1 x 41.9 x 3.8 cm)



**Tom of Finland**

*Untitled*, c. 1966 - 1990

mixed media on paper

11 5/8 x 8 1/4 inches

(29.5 x 21 cm)

framed:

16 3/8 x 13 5/8 x 1 1/2 inches

(41.6 x 34.6 x 3.8 cm)



**Tom of Finland**

*Untitled*, c. 1966 - 1990

mixed media on paper

11 1/2 x 8 1/4 inches

(29.2 x 21 cm)

framed:

16 7/8 x 13 5/8 x 1 1/2 inches

(42.9 x 34.6 x 3.8 cm)



**Bob Mizer**

*Bill Atkins (with switchblade)*, c. 1957

selenium-toned gelatin silver print

9 1/2 x 7 1/4 inches

(24.1 x 18.4 cm)

framed:

14 3/4 x 12 1/2 x 1 3/8 inches

(37.5 x 31.8 x 3.5 cm)

Edition of 5

# DAVID KORDANSKY GALLERY



## **Tom of Finland**

*Untitled (from "Pekka - Camping")*, 1976

gouache on paper mounted on board

15 3/4 x 11 1/2 inches

(40 x 29.1 cm)

framed:

21 3/8 x 17 1/8 x 1 1/2 inches

(54.3 x 43.5 x 3.8 cm)



## **Nayland Blake**

*Spirits of the Streets*, 2026

vinyl and metal

59 1/2 x 37 3/4 inches

(151.1 x 95.9 cm)

Edition of 3, with 1 AP



## **Peter Berlin**

*Untitled*, c. 1970s

hand-painted gelatin silver print with collage

14 x 11 inches

(35.6 x 27.9 cm)

framed:

16 5/8 x 13 5/8 x 1 1/2 inches

(42.2 x 34.6 x 3.8 cm)



## **Peter Berlin**

*Untitled*, c. 1970s

vintage hand-painted gelatin silver print

13 3/4 x 10 inches

(34.9 x 25.4 cm)

framed:

16 3/8 x 12 5/8 x 1 1/2 inches

(41.6 x 32.1 x 3.8 cm)

**DAVID  
KORDANSKY  
GALLERY**



**Tom of Finland**

*Untitled (Peter Berlin, Preparatory Drawing), 1978*

graphite on paper  
11 3/4 x 8 1/4 inches  
(29.8 x 21 cm)

framed:  
20 1/4 x 16 1/4 x 1 1/2 inches  
(51.4 x 41.3 x 3.8 cm)



**Ken Tisa**

*New Wig, New Face, 1990 - 1998*

acrylic on canvas  
20 x 16 x 3/4 inches  
(50.8 x 40.6 x 1.9 cm)



**Peter Hujar**

*Cockette Kreemah Ritz, 1971*

gelatin silver print  
16 7/8 x 13 3/4 inches  
(42.9 x 34.9 cm)

framed:  
24 1/4 x 21 1/4 x 1 1/8 inches  
(61.6 x 54 x 2.9 cm)



**Elizabeth Sunflower**

*Untitled (Allen Ginsberg and the Cockettes), San Francisco, CA,  
1971 / 2026*

archival giclée print  
7 3/8 x 11 inches  
(18.6 x 27.9 cm)

framed:  
7 7/8 x 11 1/2 x 1 1/4 inches  
(19.8 x 29.2 x 3.2 cm)  
Edition of 3, with 1 AP

**DAVID  
KORDANSKY  
GALLERY**



**Elizabeth Sunflower**

*Cockette, Golden Gate Park, San Francisco, CA, 1971 / 2026*

archival giclée print

11 x 7 3/8 inches

(27.9 x 18.6 cm)

framed:

11 1/2 x 7 7/8 x 1 1/4 inches

(29.2 x 19.8 x 3.2 cm)

Edition of 3, with 1 AP



**James Bidgood**

*Painting Session, c. 1960s / 2022*

digital C-print

15 x 15 inches

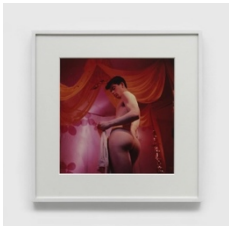
(38.1 x 38.1 cm)

framed:

22 1/4 x 22 1/4 x 1 1/4 inches

(56.5 x 56.5 x 3.2 cm)

Edition of 25



**James Bidgood**

*Bobby Nude from Below, First Cover (Bobby Kendall), c. 1960s / 2025*

digital C-print

15 x 15 inches

(38.1 x 38.1 cm)

framed:

22 1/4 x 22 1/4 x 1 1/4 inches

(56.5 x 56.5 x 3.2 cm)

Edition of 25

**DAVID  
KORDANSKY  
GALLERY**



**Jack Smith**

*Untitled*, 1982

collage with black and white photograph

7 1/2 x 9 1/2 inches

(19.1 x 24.1 cm)

framed:

11 x 13 x 1 1/2 inches

(27.9 x 33 x 3.8 cm)



**Steven Arnold**

*Untitled "Ta Ta" costume design for an unrealized opera*, 1988

ink on paper

10 x 8 inches

(25.4 x 20.3 cm)

framed:

14 5/8 x 12 1/8 x 1 3/8 inches

(37.1 x 30.8 x 3.5 cm)



**Jack Smith**

*Untitled*, c. 1982

mixed media on paper

13 7/8 x 16 3/4 inches

(35.2 x 42.5 cm)

framed:

17 x 19 3/4 x 1 7/8 inches

(43.2 x 50.2 x 4.8 cm)



**Ken Tisa**

*When I was a Queen*, 1990 - 1998

acrylic on canvas

20 x 16 x 3/4 inches

(50.8 x 40.6 x 1.9 cm)

**DAVID  
KORDANSKY  
GALLERY**



**Tom of Finland**

*Untitled*, c. 1968

graphite on paper  
8 3/8 x 5 7/8 inches  
(21.1 x 14.9 cm)

framed:

14 x 11 1/2 x 1 1/2 inches  
(35.6 x 29.2 x 3.8 cm)



**Hugh Steers**

*Floor Mirror*, 1989

oil on canvas  
40 x 47 1/2 x 2 1/8 inches  
(101.6 x 120.7 x 5.4 cm)

framed:

41 3/4 x 49 1/4 x 3 inches  
(106 x 125.1 x 7.6 cm)



**Jory Drew**

*Untitled (Fun Size)*, 2026

glazed stoneware  
21 1/2 x 17 3/8 x 17 3/8 inches  
(54.6 x 44.1 x 44.1 cm)



**Tom of Finland**

*Untitled (Preparatory Drawing, from Kake vol. 13 - "Sightseeing")*, 1973

graphite on paper  
11 3/4 x 8 1/4 inches  
(29.8 x 21 cm)

framed:

17 3/4 x 14 3/4 x 1 3/4 inches  
(45.1 x 37.5 x 4.4 cm)

**DAVID  
KORDANSKY  
GALLERY**



**Tom of Finland**

*Untitled (Preparatory Drawing)*, 1988

graphite and ink on paper

11 x 8 1/2 inches

(27.9 x 21.6 cm)

framed:

17 3/4 x 14 3/4 x 1 3/4 inches

(45.1 x 37.5 x 4.4 cm)



**Tom of Finland**

*Untitled (Preparatory Drawing, from "I Fuck All Police")*, 1966

graphite on paper

8 1/4 x 5 7/8 inches

(21 x 14.9 cm)

framed:

14 1/2 x 12 x 1 3/4 inches

(36.8 x 30.5 x 4.4 cm)



**Mike Kelley**

*Untitled #3*, 2008

mixed media on paper

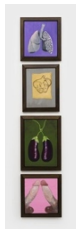
29 x 23 inches

(73.7 x 58.4 cm)

framed:

33 x 27 x 1 3/8 inches

(83.8 x 68.6 x 3.5 cm)



**Mike Kelley**

*Lobed*, 2008 - 2009

acrylic on canvas, in artist's frames

four parts, overall:

102 5/8 x 22 1/4 x 1 1/4 inches

(260.7 x 56.5 x 3.2 cm)

**DAVID  
KORDANSKY  
GALLERY**



**Ruby Neri**

*Fill My Cup*, 2026  
ceramic with glaze  
33 1/2 x 22 x 22 inches  
(85.1 x 55.9 x 55.9 cm)



**Chris Martin**

*Red, Green, Yellow and Brown*, 2024 - 2026  
acrylic and glitter on canvas  
19 x 16 x 2 1/2 inches  
(48.3 x 40.6 x 6.3 cm)



**Ebecho Muslimova**

*Fatebe on the Burnt Side*, 2025  
oil on canvas  
72 x 72 x 1 1/2 inches  
(182.9 x 182.9 x 3.8 cm)



**Jonathan Lyndon Chase**

*Twin Mountains*, 2026  
charcoal on paper  
22 1/2 x 15 3/4 inches  
(57.1 x 40 cm)  
framed:  
25 1/4 x 18 1/2 x 1 1/2 inches  
(64 x 46.8 x 3.8 cm)



**Jonas Wood**

*Bowe V. Valuev*, 2014  
gouache and colored pencil on paper  
25 1/4 x 27 5/8 inches  
(64 x 70.2 cm)  
framed:  
28 1/4 x 30 7/8 x 1 3/4 inches  
(71.8 x 78.4 x 4.4 cm)

# DAVID KORDANSKY GALLERY



**Martin of Holland**

*Beneath the "Eagle's" Toilets, 1987*

mixed media on paper

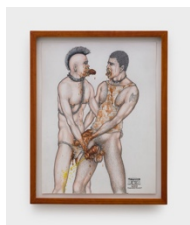
8 1/8 x 11 3/8 inches

(20.6 x 28.9 cm)

framed:

10 1/8 x 13 3/8 x 1 inches

(25.7 x 34 x 2.5 cm)



**Martin of Holland**

*Punker's Delight, 1984*

mixed media on paper

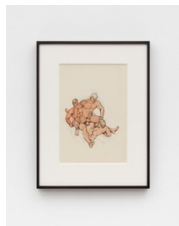
12 5/8 x 9 5/8 inches

(32.1 x 24.4 cm)

framed:

14 1/2 x 11 1/2 x 1 inches

(36.8 x 29.2 x 2.5 cm)



**Tom of Finland**

*Untitled (from "Camping"), 1976*

pen, ink, and gouache on board

11 3/4 x 8 1/4 inches

(29.8 x 21 cm)

framed:

17 1/4 x 13 1/2 x 1 1/2 inches

(43.8 x 34.3 x 3.8 cm)



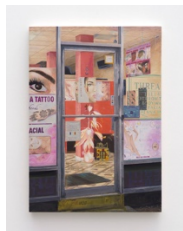
**Tala Madani**

*Spirit Orgy, 2026*

oil on linen

17 x 20 inches

(43.2 x 50.8 cm)



**Aaron Gilbert**

*threading, 2026*

oil on linen

31 3/4 x 22 3/4 x 1 1/2 inches

(80.6 x 57.8 x 3.8 cm)

**DAVID  
KORDANSKY  
GALLERY**



**Salman Toor**

*Poet-Clown*, 2024  
oil on panel  
24 x 18 x 1 1/2 inches  
(61 x 45.7 x 3.8 cm)



**Monica Majoli**

*Blueboy (Rameses)*, 2023  
watercolor woodcut transfer on paper  
68 1/2 x 57 1/2 inches  
(174 x 146.1 cm)  
framed:  
72 1/4 x 61 1/2 x 2 inches  
(183.5 x 156.2 x 5.1 cm)



**Anita Steckel**

*Untitled, Anita of NY Meets Tom of Finland*, 2005  
oil and colored pencil on book page with collage  
16 x 13 inches  
(40.6 x 33 cm)  
framed:  
20 3/4 x 16 3/4 x 1/2 inches  
(52.7 x 42.5 x 3.8 cm)



**Anita Steckel**

*Untitled, Anita of NY Meets Tom of Finland*, 2004  
oil on book page with collage  
16 3/4 x 14 inches  
(42.5 x 35.6 cm)  
framed:  
20 3/4 x 16 3/4 x 1/2 inches  
(52.7 x 42.5 x 3.8 cm)

**DAVID  
KORDANSKY  
GALLERY**



**Kye Christensen-Knowles**

*Epilogue, 2026*

oil on linen

29 x 22 1/4 x 1 inches

(73.7 x 56.4 x 2.5 cm)

framed:

35 3/4 x 28 7/8 x 2 inches

(90.6 x 73.3 x 5.1 cm)



**Tiona Nekkia McClodden**

*NEVER LET ME GO | XXVI. wide open [26], 2025*

black jute rope, leather, leather dye, and Saphir shoe polish

50 3/8 x 26 3/8 x 2 3/4 inches

(128 x 67.1 x 7 cm)



**Tom of Finland**

*Untitled (from Kake vol. 17 - "Loading Zone"), 1975*

pen and ink on paper

13 x 9 1/2 inches

(33 x 24.1 cm)

framed:

19 1/4 x 15 3/4 x 1 1/2 inches

(48.9 x 40 x 3.8 cm)



**Sam McKinniss**

*Amanda Lepore, 2026*

oil on linen

66 x 42 x 1 1/2 inches

(167.6 x 106.7 x 3.8 cm)

framed:

67 1/2 x 43 1/2 x 2 1/4 inches

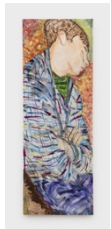
(171.4 x 110.5 x 5.7 cm)

**DAVID  
KORDANSKY  
GALLERY**



**Donald Moffett**

*Lot 020425 (the probe, A), 2025*  
oil on linen on panel with steel hardware  
20 1/4 x 16 x 3 1/8 inches  
(51.4 x 40.6 x 7.9 cm)



**Ramsey Alderson**

*Pure Morning, 2026*  
oil, acrylic, and charcoal on canvas  
72 x 24 1/8 x 1 1/4 inches  
(182.9 x 61.3 x 3.2 cm)



**Paul Cadmus**

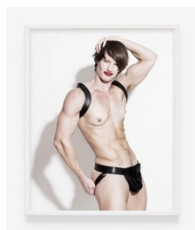
*Nude with Mirror, c. 1960s*  
colored pencil and Conté crayon on blue paper  
26 x 18 1/2 inches  
(66 x 47 cm)  
framed:  
31 x 24 x 1 1/2 inches  
(78.7 x 61 x 3.8 cm)



**Robert Mapplethorpe**

*Lisa Lyon, 1982*  
gelatin silver print  
20 x 16 inches  
(50.8 x 40.6 cm)  
framed:  
29 x 24 x 1 1/4 inches  
(73.7 x 61 x 3.2 cm)  
Edition of 10, with 2 AP

**DAVID  
KORDANSKY  
GALLERY**



**Cassils**

*Pin Up from the Magazine Lady Face Man Body, No. 3, 2011*

archival pigment print

18 x 14 1/8 inches

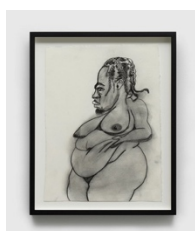
(45.7 x 35.9 cm)

framed:

18 3/4 x 14 7/8 x 1 1/2 inches

(47.5 x 37.6 x 3.8 cm)

Edition of 10



**Jonathan Lyndon Chase**

*pulling folds, 2026*

charcoal on paper

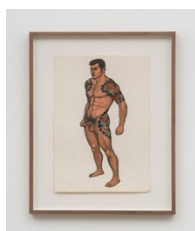
15 1/2 x 11 3/4 inches

(39.4 x 29.8 cm)

framed:

18 1/4 x 14 1/2 x 1 1/2 inches

(46.2 x 36.7 x 3.8 cm)



**Go Mishima**

*Untitled, c. 1970 - 1989*

ink on paper

21 5/8 x 15 inches

(55 x 38 cm)

framed:

29 1/2 x 22 7/8 x 1 3/8 inches

(75 x 58 x 3.5 cm)



**Doron Langberg**

*Lover, 2024*

oil on linen

30 x 24 1/4 x 1 inches

(76.2 x 61.6 x 2.5 cm)

**DAVID  
KORDANSKY  
GALLERY**



**Paul Cadmus**

*Untitled*, c. 1960 - 1980  
chalk on beige laid paper  
13 1/4 x 19 inches  
(33.7 x 48.3 cm)

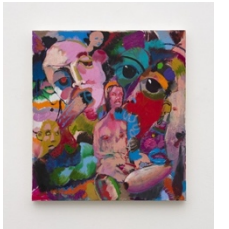
framed:

17 3/8 x 23 1/8 x 1 1/2 inches  
(44.1 x 58.7 x 3.8 cm)



**Richard Hawkins**

*Most Eligible Bastard*, 2023  
oil on canvas  
16 x 20 x 1 inches  
(40.6 x 50.8 x 2.5 cm)



**Richard Hawkins**

*Poor Substitute*, 2026  
oil on canvas  
21 x 19 x 1 inches  
(53.3 x 48.3 x 2.5 cm)



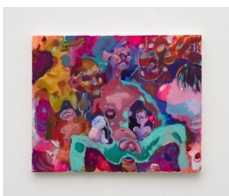
**Richard Hawkins**

*Capital Queue*, 2023  
oil and collage on canvas  
16 x 20 x 1 inches  
(40.6 x 50.8 x 2.5 cm)



**Richard Hawkins**

*Main Character Syndrome*, 2026  
oil on canvas  
20 x 24 x 1 inches  
(50.8 x 61 x 2.5 cm)



**Richard Hawkins**

*Late One Night at the Candy Factory*, 2023  
oil on canvas  
16 x 20 x 1 inches  
(40.6 x 50.8 x 2.5 cm)

**DAVID  
KORDANSKY  
GALLERY**



**The Cockettes, The Angels of Light, and Martin Wong**

*Selection of archival ephemera, c. 1969 - 1970s*