

Simpfiwe Mbunyuza

UMTHONYAMA

January 16 – February 22, 2025

New York

Press Release

David Kordansky Gallery is pleased to announce *UMTHONYAMA*, a solo exhibition of new ceramic sculpture by Simphiwe Mbunyuza. The exhibition is on view in New York at 520 W. 20th St., from January 16 through February 22, 2025. An opening reception will be held on Thursday, January 16 from 6 to 8 PM.

Mbunyuza's work stems from a personal and spiritual exploration of long-performed ritual and iconography associated with the Xhosa people of the Eastern Cape Province of South Africa. Throughout his practice, the artist has developed a unique approach to his materials, in which he's able to achieve uncommon textures and glazes that highlight his grasp of both the material itself and the processes and temperatures in which clay is fired. Each sculpture incorporates distinct markings in the shapes of houses, animals, garments, and ridged or stippled patterns, arranged in large swaths and demarcated by contrasting colors and impressed linework.

The exhibition takes its name from a term used to define the rectangular section within a family's livestock enclosure where familial rituals take place. By designating this space as a kind of divine site, it maintains the spiritual potency, so that reinterpretations of the physical space may retain some of that sanctity. The physical and intangible aspects of the *umthonyama* work together to help participants attune to their ancestors. Family members may fast, separate from their partners, or alter other aspects of their daily life prior to the performance of the ritual in order to shift their focus entirely on accessing the deepest wells of their spirituality.

Throughout the exhibition, figurative forms act as conduits to familial ancestors. This selection of new works primarily focuses on two different scales; the larger sculptures, measuring roughly five feet tall, represent relatives who would have crossed over generations ago and whose names are often invoked throughout religious ceremonies. The smaller works on view, however, offer abstracted visualizations of the less developed or younger spirits inhabited by living relatives, including Mbunyuza and his immediate family. The placement of the works within the exhibition and the relationship of the various forms in relation to one another offer a tangible access point to an otherwise exclusive, deeply spiritual world.

Smaller works, like *IGWELE* (2024) with its open top and horn-like handle, also call to mind other elements present in the *umthonyama*, such as pots used for the fermenting and drinking of traditional beer and wide-mouthed bowls that hold the remains of sacrificial animals and plant matter. The flattened lip lining the edge of *IGWELE*'s rim recalls traditional skirts and dress of Xhosa women. In this way, Mbunyuza's works are inseparable from the customs, people, and place he knows as home. The disparate visual imagery comes together in surprising configurations, marrying color and texture to transform raw material into striking sculptural works.

Animals play a vital role in these ceremonies, but also in Xhosa society more broadly. Horn-like appendages are a common feature throughout the exhibition, whether they are affixed to the vessels to give the appearance of

a handle, curled up to mimic an animal tail, or—in the case of *NDLEBENTLE'ZOMBINI* (2024)—as an opposing set of ears placed near the top, or head, of the figure. This work is one of a few pieces that incorporate language onto the surface of the form; in this case the word *XHOSA* in capital letters, adorned with little drawings of blue and white houses. The vibrant tones Mbunyuza is able to achieve are contrasted by large stretches of dirt-like browns that appear almost smeared on by the artist's hand, alluding to the earth from which the material came and the exterior landscapes in which the rituals that inspired this group of works take place.

At the heart of Mbunyuza's project is an intention to honor and amplify the people and places he holds dear. The artist channels an intuition-led process to guide him through every stage of making. Work is completed in response to impulses whenever they arise so that, in a way, the circumstances of each piece's creation carry a divine quality in and of themselves. The physical manipulation of clay—paired with subconscious or overt visions and ideas—moves the artist to create unique works rich with color and deeply rooted in cultural meaning.

Simphiwe Mbunyuza (b. 1989, Butterworth, Eastern Cape, South Africa) recently completed a long-term artist residency at Archie Bray Foundation for the Ceramic Arts in Helena, Montana. Recent group exhibitions include *ArtNow*, Oklahoma Contemporary, Oklahoma City (2021); *Small Objects*, A.I.R. Vallauris, France (2017); *Franschhoek Annual Festival*, Art in the Yard Gallery, Franschhoek, South Africa (2016), among others. Mbunyuza lives and works in Butterworth, East Cape, South Africa.

Simphiwe Mbunyuza

UMTHONYAMA

January 16 - February 22, 2025



Simphiwe Mbunyuza

UMQHAGI, 2024

ceramic

42 1/2 x 33 1/2 x 22 inches

(108 x 85.1 x 55.9 cm)



Simphiwe Mbunyuza

CILASHE, 2024

ceramic

62 x 44 x 45 1/2 inches

(157.5 x 111.8 x 115.6 cm)



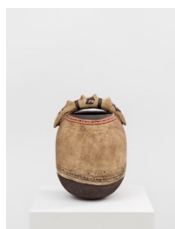
Simphiwe Mbunyuza

INTUKU, 2024

ceramic

28 1/2 x 31 x 27 1/2 inches

(72.4 x 78.7 x 69.8 cm)



Simphiwe Mbunyuza

EMAXHANTINI, 2024

ceramic

16 1/2 x 11 x 10 inches

(41.9 x 27.9 x 25.4 cm)



Simphiwe Mbunyuza

EGOQWENI, 2024

ceramic

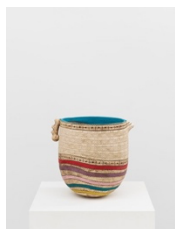
15 x 16 x 11 inches

(38.1 x 40.6 x 27.9 cm)

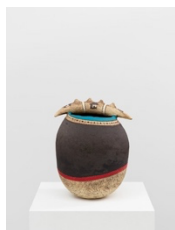
**DAVID
KORDANSKY
GALLERY**



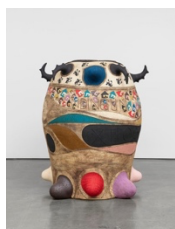
Simphiwe Mbunyuza
NDLEBENTLE'ZOMBINI, 2024
ceramic
61 x 45 x 45 inches
(154.9 x 114.3 x 114.3 cm)



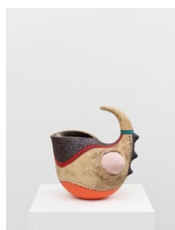
Simphiwe Mbunyuza
RHABULAPHA'UNGAFINCI, 2024
ceramic
11 1/2 x 13 x 11 inches
(29.2 x 33 x 27.9 cm)



Simphiwe Mbunyuza
SICELI'THAMSANQA, 2024
ceramic
15 x 12 x 11 inches
(38.1 x 30.5 x 27.9 cm)

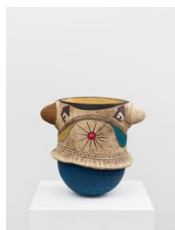


Simphiwe Mbunyuza
MTHIMKHULU, 2024
ceramic
63 x 53 x 51 inches
(160 x 134.6 x 129.5 cm)



Simphiwe Mbunyuza
CAMAGUSHA, 2024
ceramic
14 x 14 x 12 1/2 inches
(35.6 x 35.6 x 31.8 cm)

**DAVID
KORDANSKY
GALLERY**



Simphiwe Mbunyuza

INTOMBI ZE KHAYA, 2024

ceramic

15 x 16 x 13 inches

(38.1 x 40.6 x 33 cm)



Simphiwe Mbunyuza

USILA, 2024

ceramic

17 3/4 x 15 1/2 x 14 3/4 inches

(45.1 x 39.4 x 37.5 cm)



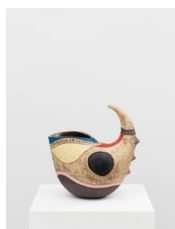
Simphiwe Mbunyuza

BUVUMILE, 2024

ceramic

13 1/2 x 17 x 11 inches

(34.3 x 43.2 x 27.9 cm)



Simphiwe Mbunyuza

IMPEPHO, 2024

ceramic

14 1/4 x 14 x 14 inches

(36.2 x 35.6 x 35.6 cm)